



Paint Creek Recreational Trail Plan

The next five years and beyond! How Ross County Park District plans to repair, maintain and revive 22 miles of community paved trail.

Ted Hagarman

Ross County Park District

Project Manager since 2021

Paint Creek Recreational Trail Coordinator.

Bachelors Degree in Environmental Policy and Analysis from Bowling Green State University.

Outdoor Enthusiast and Bird/Tree nerd.

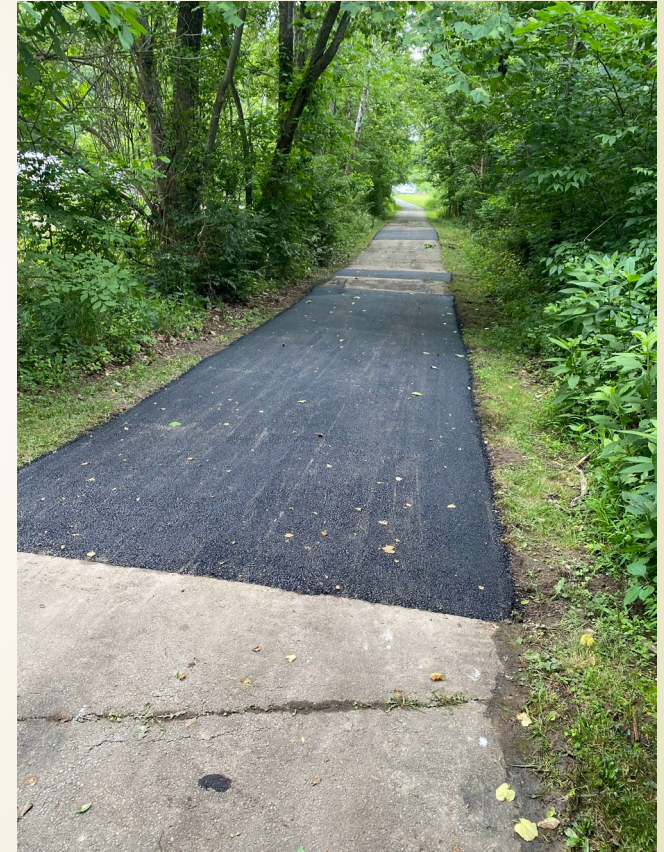


Accomplishments

- Replaced culvert near Larrick Lane with much larger smooth wall pipe and have plans to replace several others this year and the next.
- Started crack and root work on Basecamp and have bid a contract to repair cracks and root damage on over 10 miles of the trail from the city line to Austin crossing.

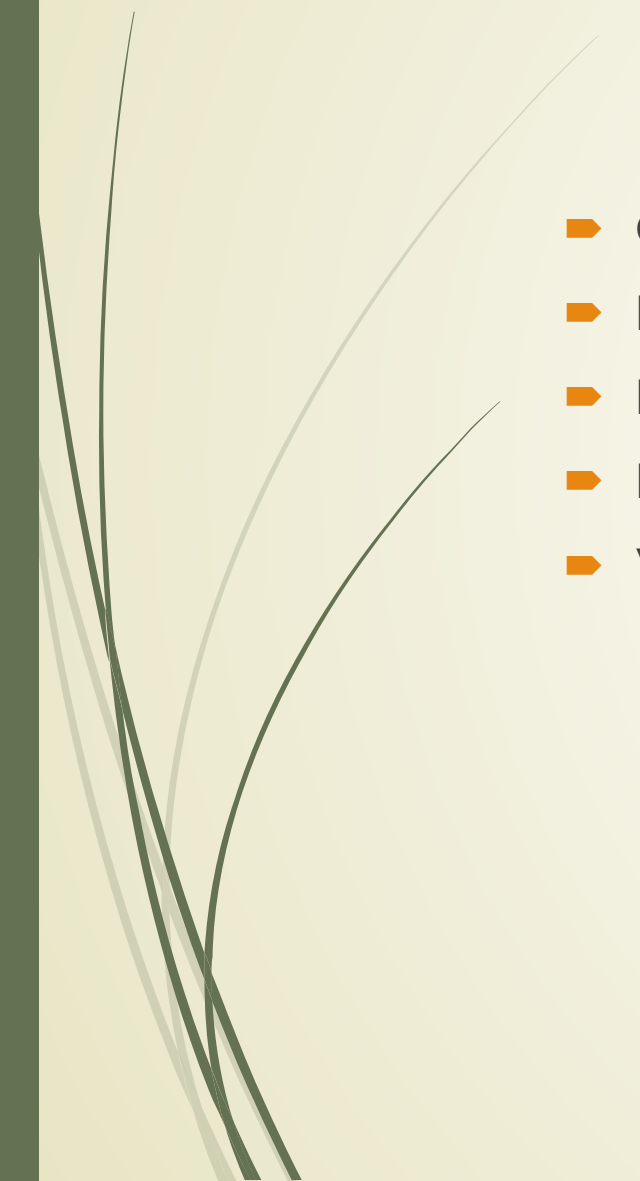
Tri-County Triangle Trail recently had root work done off Musselman Station Rd!

- Working with Tri-County Triangle Trail, Inc and Lowes to replace deck boards on bridges later this summer.
- Working with EPA and Army Corps of Engineers on how to properly stabilize erosion zones.
- Applied for funds through Transportation Alternatives Program (were not awarded but can apply with revised plan in the future.)
- Preparing a project for Appalachian Community Grant Funds





Obstacles

- ▶ Cracks and Root damage to pavement
 - ▶ Erosion and slip areas
 - ▶ Ditch work and culverts
 - ▶ Bridge repairs
 - ▶ Vegetation control
- 



Basecamp Phases

Phase 1

- Crack and Root Repairs on just over 10 miles of most heavily used section. Chillicothe to Frankfort.

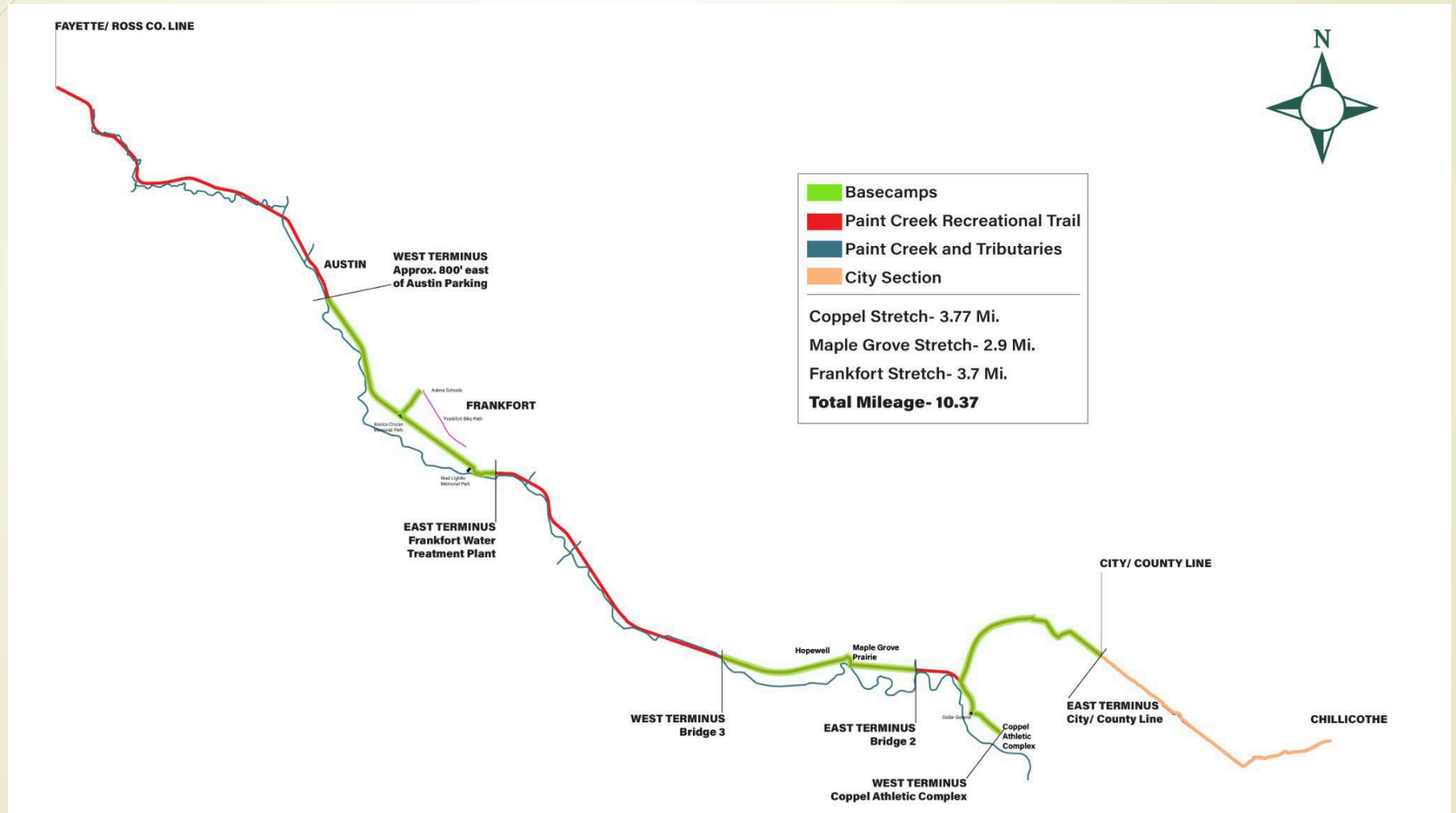
Phase 2

- Slowing Erosion
- Bridge 6
- Double D

Phase 3

- Pursuit of long term funding
- TAP, OVRDC, Appalachian Community Grant

Basecamp



Short Term Plans



- ▶ Next 2 years (now till 2025)
- ▶ Focus on repairs we can complete now easily such as ditch and culvert work, tree and vegetation control and crack and root repairs.
- ▶ Provisional bank stabilization methods vetted by EPA and Army Corps such as construction netting and native plants to increase root mass in order to retain what is there while we prepare to do larger engineered repairs.
- ▶ Increased regular maintenance and inspections. Multiple times a month.
- ▶ Evaluating and determining priority areas

Crack repairs and root removal



- ▶ Sealing cracks to prevent further damages.
- ▶ Root repairs by cutting out problem roots that push up through the pavement.
- ▶ Increase safety and overall quality of the surface.

Ditch work and culverts



- Replacing damaged and undersized culverts or adding culverts to increase drainage away from the path.
- Clearing and digging out ditches to eliminate standing water and runoff.
- Both will help decrease moss build up. Additionally a power washer trailer is being updated to clean off mossy and slippery areas.

Vegetation Plan



- ▶ Using both our trained staff, TTT and hired arborists to cut out problem trees.
- ▶ Consulting with a certified invasive species specialist and contracting them to spray and remove invasives and other lowland vegetation.
- ▶ Currently in the process of purchasing a new ditch bank mower to more easily cut back brush and small trees from the edges of the path.

Long Term



- ▶ 2 years and beyond (2025 and future)
- ▶ If awarded funding through Appalachian Community Grant activities like erosions zones and resurfacing will be addressed.
- ▶ Continue to seek additional funding to complete larger erosion and bridge repairs.
- ▶ Continue to work with Tri-county Triangle Trial to improve and maintain the entire Ross County and Fayette County sections.
- ▶ Evaluating the purchase of some other small equipment to quickly make minor surface repairs on our own without breaking the bank.

Erosion and Slip areas



- ▶ Working to stabilize and slow any erosion using multiple methods.
- ▶ Holding ground rather than letting it wash away.
- ▶ Construction netting, strategic placing of stone and the planting of native willow shoots to create root mass.
- ▶ Focusing on big areas like Double D and then moving to smaller erosion zones.

Bridges



- Repairing and reinforcing ends where pavement meets the bridge decks. Ground hog and beaver control(short term)
- Use concrete methods to strengthen and prevent future problems. (long term)
- Replacing damaged or rotting deck boards (short term goal)
- Replacing large trusses and supports (long term goal)

Coppel Extension



- Funded by Recreational Trails Program and State Capital Funds to construct an extension from the corner of Veterans Parkway and US 50 to Don Coppel Athletic Complex off of Western Ave.
- Increasing accessibility to recreation to people on the west side Chillicothe.
- Increasing local business traffic.
- Safer access to non motorized transportation.

Questions?



- No plans or intentions to close any part of the Paint Creek Rec Trail.
- Creating action plan for Double D.
- Open to ideas and suggestions.
- Respect and communication with adjacent land owners.

