

Ross County Park District
15 N. Paint Street Suite 301
Chillicothe, OH 45601



ADDENDUM #1

CONSTRUCTION OF HERRON DOWNS PARKING LOT

6397 SR-159

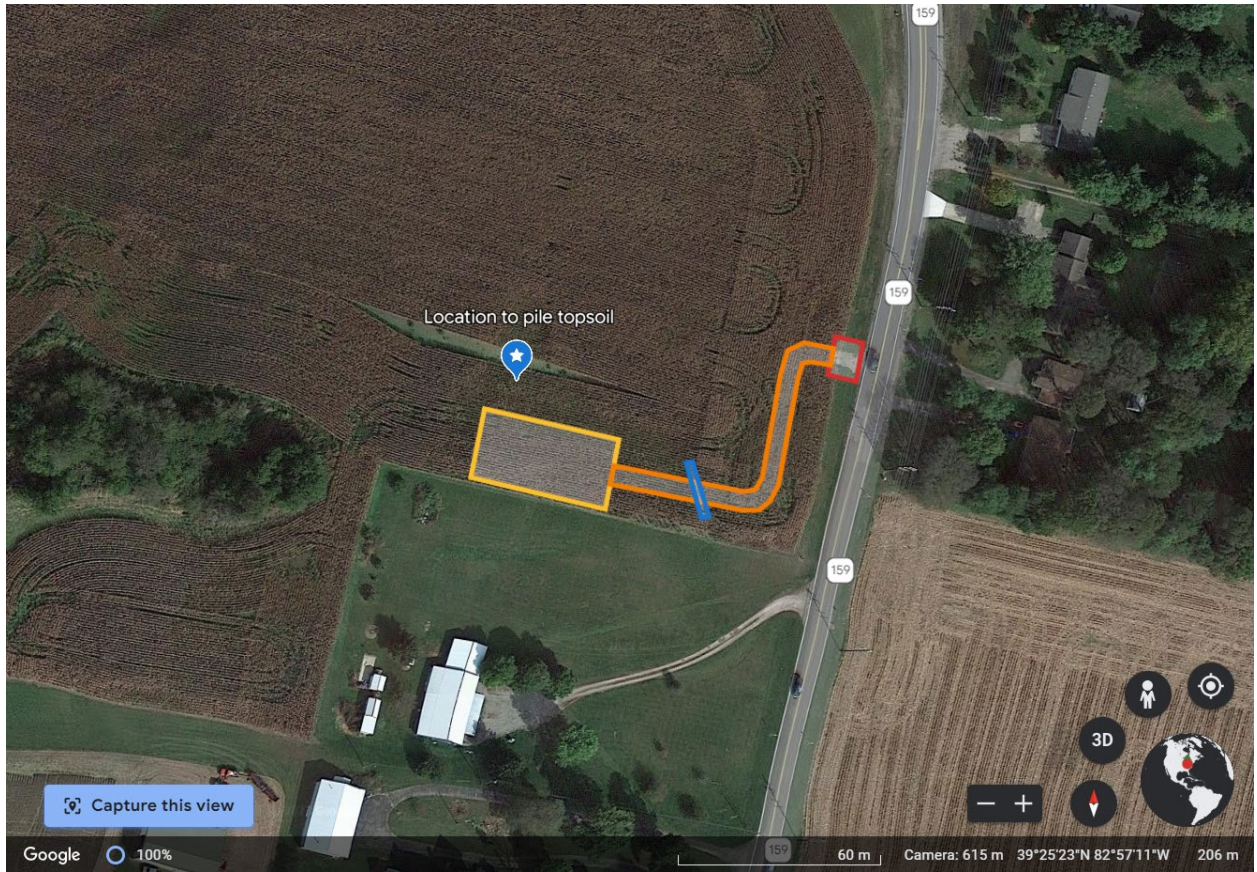
Chillicothe, OH 45601

Date Issued: July 12th, 2023

In accordance with the Construction Documents for the above-named project, this **ADDENDUM #1**, consisting of 2 pages, is hereby made a part of the Construction Documents as if written therein.

The scope of work has been modified so that the gravel for the entirety of the project is to be size 304. Additionally, the project scope will include the laying of construction fabric (roughly 17,000sqft) underneath the gravel access lane and parking lot.

The culvert, depicted by the blue line, will be changed to 8" diameter and 40' long HPE culvert. Lastly, the removal of any topsoil, if required, will be placed in the location depicted by a blue star marker on the attached image.



End of ADDENDUM #1