

Ross County Park District
15 N. Paint Street Suite 301
Chillicothe, OH 45601



ADDENDUM #2

CONSTRUCTION OF MAPLE GROVE PARKING AREA

44 Anderson Station Road

Chillicothe, OH 45601

Date Issued: June 2nd, 2023

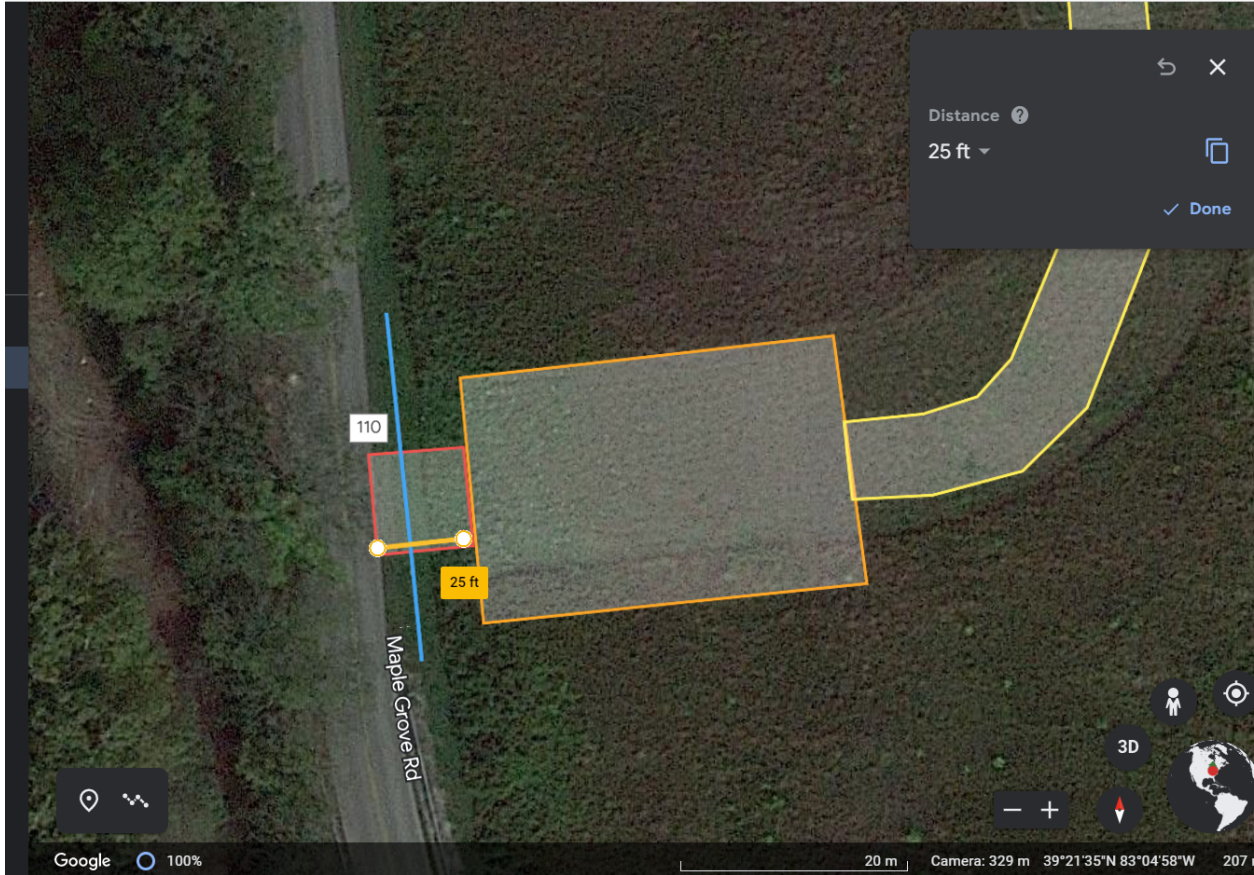
In accordance with the Construction Documents for the above-named project, this **ADDENDUM #2**, consisting of 2 pages, is hereby made a part of the Construction Documents as if written therein.

The scope of work has been modified so that the access from Maple Grove Rd. to the new parking lot is to be 25' wide and 25' long. The clarification in length is to ensure that the slope of the access to the parking lot is not too steep and to shift the parking area back off of the road.

Invitation To Bid- Construction of

ROSS COUNTY PARK DISTRICT | 15 NORTH PAINT ST. SUITE 301 CHILLICOTHE, OH 45601 | (740) 773-8794
ROSSCOUNTYPARKDISTRICT.COM

1 of 2



End of Addendum #2

Invitation To Bid- Construction of

ROSS COUNTY PARK DISTRICT | 15 NORTH PAINT ST. SUITE 301 CHILLICOTHE, OH 45601 | (740) 773-8794
ROSSCOUNTYPARKDISTRICT.COM